

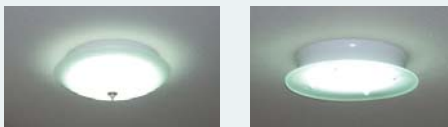
## Solectric™ Day-Light 1300 Kit

The Solectric™ Day-Light System is a day-lighting system that, unlike conventional skylights, allows you to bring the daylight indoors without cutting a large hole in your roof. The electronic skylight utilizes a photovoltaic (PV) solar panel and two high efficiency LED light fixtures connected with wires to simulate the light producing effect of a skylight. In early morning hours when the sun is low the PV panel produces a low current, which corresponds to a low light level from the LED light. As the sun moves higher in the sky the current from the PV panel increases and so does the light output from the LED light. The Solectric™ is a winning combination of renewable energy and high efficiency lighting.

The picture to the left shows the Solectric™ Day-Light 1300. The LED Light output is 1300 Lumens which is equivalent to two 60 watt incandescent light bulbs, or similar to a 10" tubular skylight. The color is Daylight white (6000K) which closely matches the light color from a tubular skylight.

### Features & Benefits

- Easy to install, no need to cut a large hole in your roof.
- Reduces home energy loss caused by hole in ceiling.
- Solar panel placement on the roof wherever the sun light is best.
- Light fixtures can be placed anywhere in your home.
- Superior light from a single light source.
- Room can be darkened during daytime with an optional switch kit.
- Long lasting solar PV and LED lighting technologies.
- Designed and built in America.
- Optional AC adapter can run the lights when the sun is down.
- Optional battery charge system for storing power at night.
- Choice of light fixture styles; surface mount or recessed.
- Choice of light colors; daylight white or warm white.
- Convenient kit form or total flexibility with custom designs.



Many difuser options available.



Solectric™ LED Lights utilizes proprietary Smart DC™ power technology. This allows Solectric™ LED Lights to use any DC power source from 12V to 24V, including solar power (direct drive), battery and AC adapters.

### Solectric™ Day-Light 1300 Kit

Part Numbers: RC24001



#### Technical Specifications:

- A single LED light fixture with 1300 Lumens at 14 Watts, color 6000 kelvin, 10.5"D x 1.8" surface mount.
- 20 Watt STC, Mono-Crystalline PV solar panel. 26" x 12" x 1"
- 33 feet of 18 GA , 2 strand copper wire
- Mounting Brackets, screws, nuts and wire nuts

**eco-boost**  
Hybrid Solar-AC Technology



## Solectric™ LED Lighting Systems

by RenCon Energy Products, Inc.

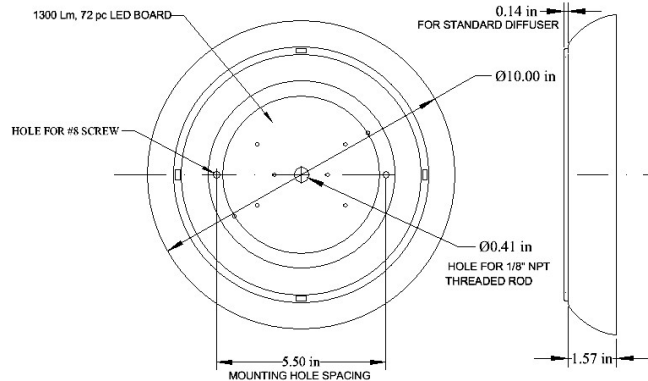
472 Moore Lane, Healdsburg, CA 95448

(800) 601-0692 • (888) 711-5127 fax

[www.solectriclights.com](http://www.solectriclights.com)

## Solectric™ Day-Light 1300 Kit (RC24001)

### High Efficiency LED Light - 1300 Lumens, 14 Watts



#### Specifications:

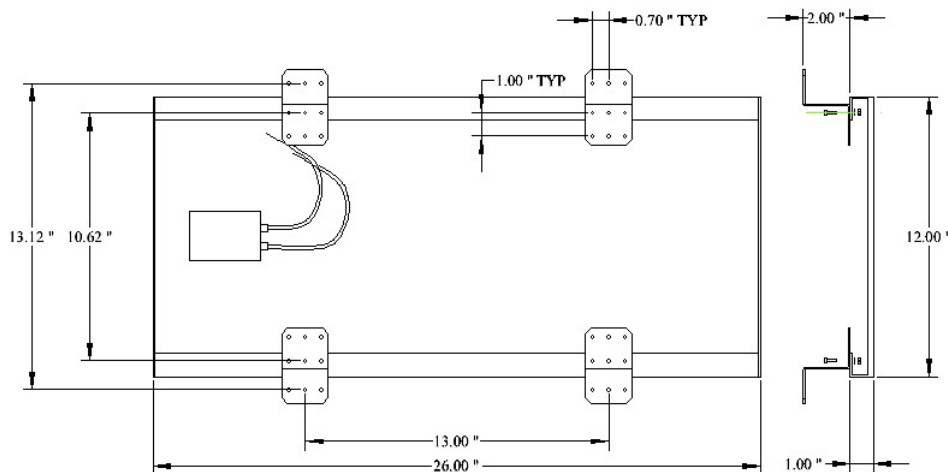
**LED Board:** 72 high brightness SMD LED modules with efficiencies up to 100 Lm/Watt. Aluminum clad PC board material for superior thermal management. Available in daylight white (6000K).

**Electronics:** High efficiency, constant current output LED driver board. Accepts wide range on input voltages from 11.5 V to 24 V for full brightness, 11 V to 8 V for dimming. Can be powered by solar panel, battery or 12V AC adapter. Can also be powered by combined solar panel and 12 V AC adapter (Solar Boost) to maintain full brightness throughout the day while utilizing all available solar power.

**Housing:** Thick gauge aluminum stamping serves as high performance heat sink to maximize life of LED's. White powder coat for maximum durability. Hole for a 1/8" NPT threaded rod. Made in the USA.

**Diffuser:** Acrylic with diamond pattern. Optional diffusers available.

### 20 Watt Solar Panel



**Solar Panel:** 20 Watts STC power @ 1.15A, 17.4V. High transparency, low iron, tempered glass. Sturdy aluminum frame, fully sealed from moisture. Weight = 5.5lbs.

**Wire:** 18 GA stranded copper, 2 conductor. UL listed. Approved for use in ducting (HVAC or ventilation).

**Mounting System:** Aluminum Z brackets raise the solar panel 2" above roof surface, allowing for air circulation under the panel. This results in cooler solar cells and higher power.

**Hardware:** Zinc chromate or black oxide steel fasteners. Plastic wire nuts and drywall anchors.

The kit includes: 1 LED light (1300 Lm) daylight white, solar panel, wire and mounting brackets.